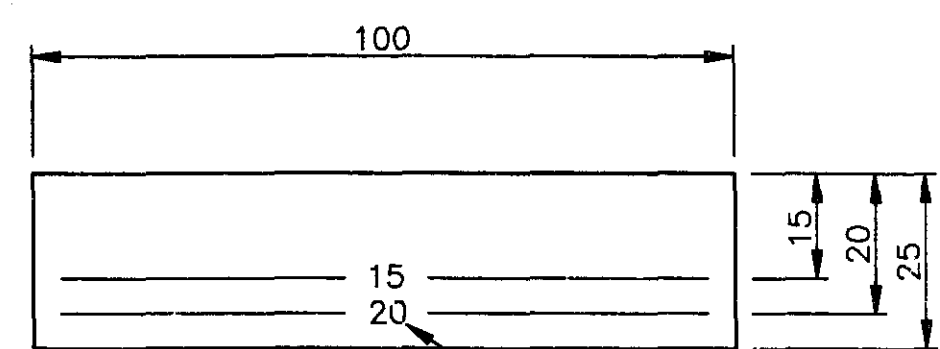
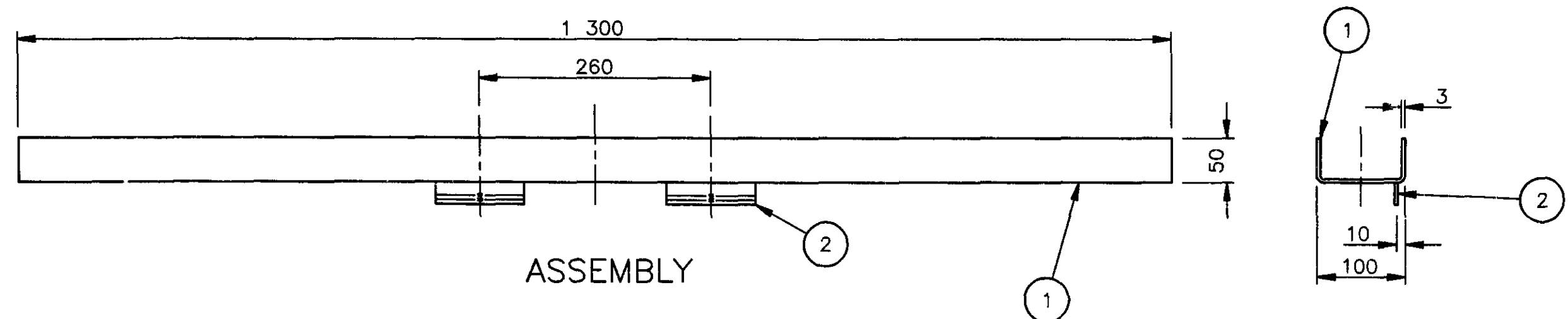
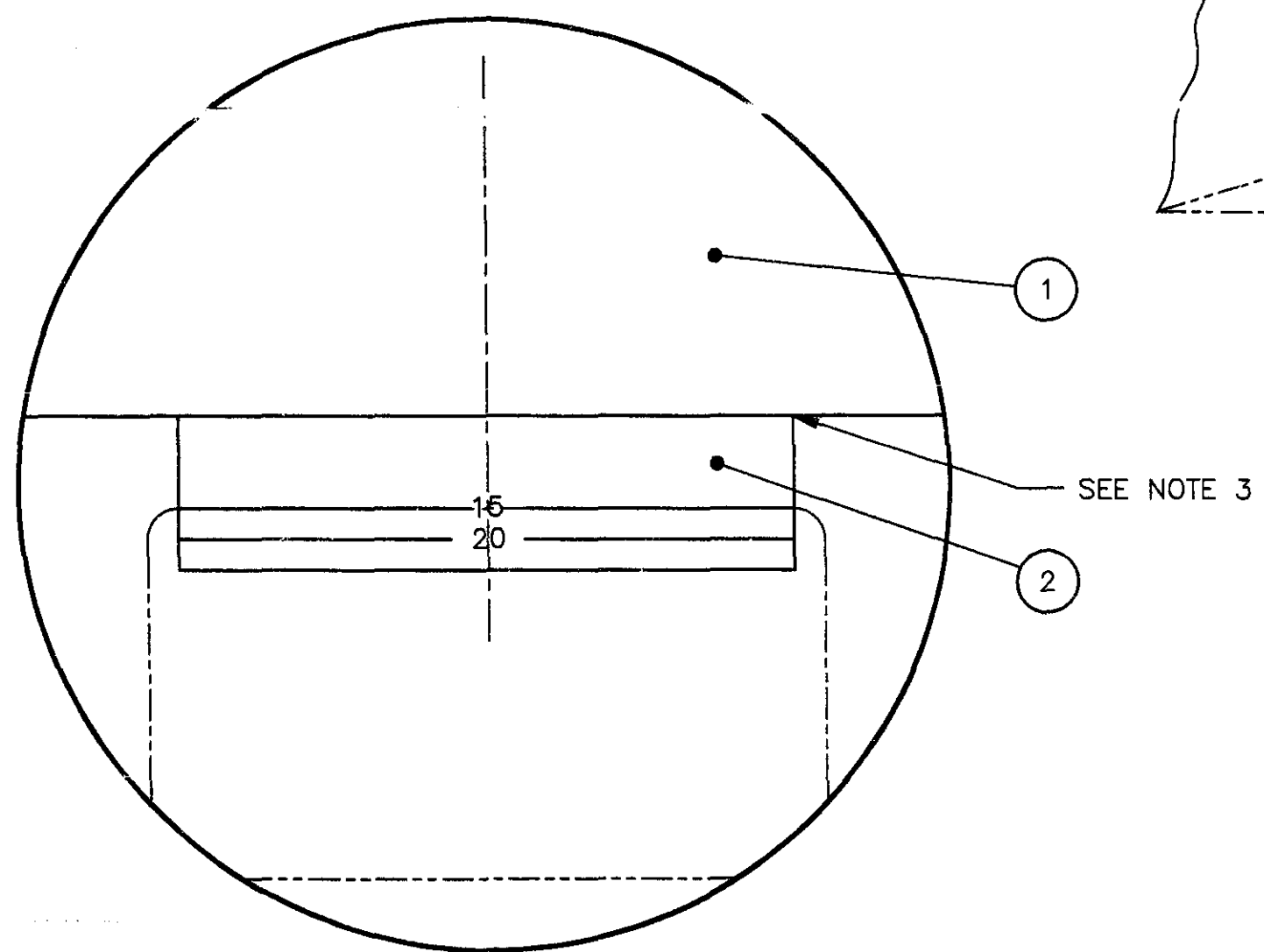
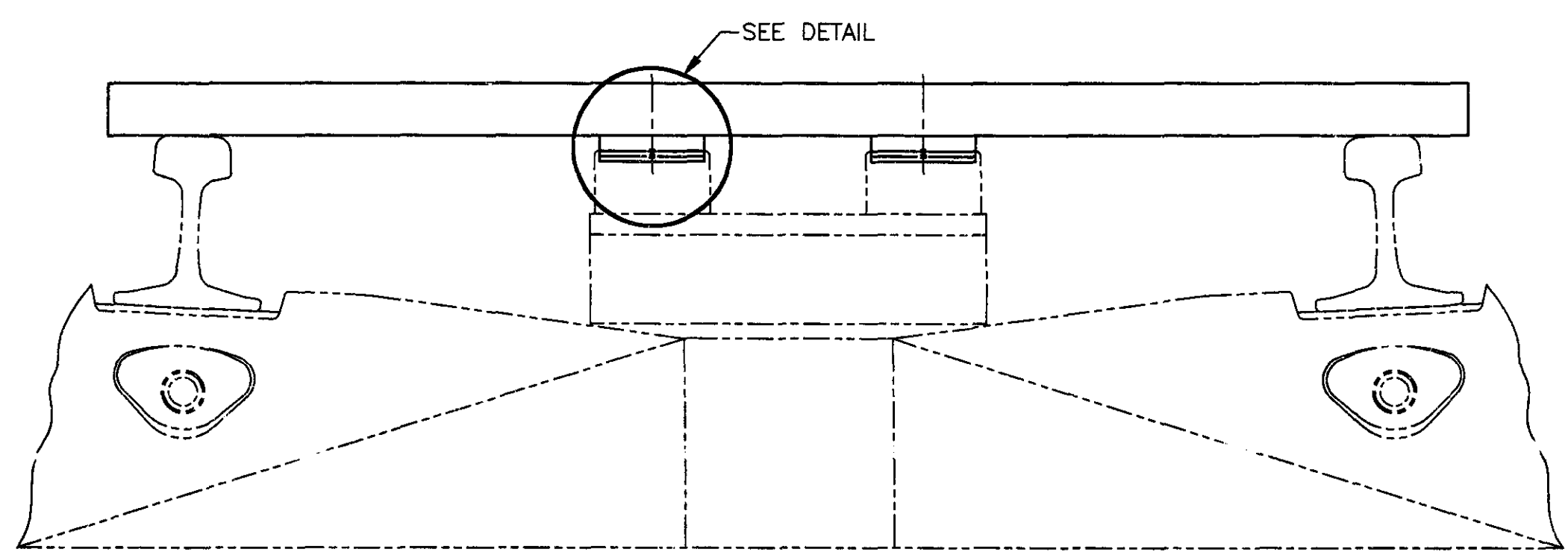


ITEM	DESCRIPTION	QTY	STORES ITEM NO	DRG NO CEE-	AMENDMENTS		
1	FIBREGLASS 3mm THK	1			NO	NAME	DATE
2	FIBREGLASS 3mm THK	2					



ITEM 2
SCALE 1:1



DETAIL
SCALE 1:1

- NOTES
1. THE TRACK MAGNET JIG MUST BE PLACED ON BOTH RAILS. THE TRACK MAGNET SHALL BE INSTALLED AT A POSITION 15mm BELOW THE CROWN OF THE RAILS. THIS INSTALLATION HEIGHT SHALL BE MONITORED ON A ANNUAL BASIS. (THIS DIMENSION IS TO THE TOP OF THE MAGNET AND NOT TO THE TOP OF THE PROTECTIVE RAMP).
 2. BY INSTALLATION OF NEW RAILS, THE TRACK MAGNET MUST BE REINSTALLED TO THE 15mm MARK.
 3. ITEM 1 AND 2 MUST BE ATTACHED TO EACH OTHER WITH FIBREGLASS RESIN.
 4. FOR TRACK MAGNET SEE DRG NO CEE-TLE-7.
 5. DIMENSION REFERENCES AND LINES TO BE ENGRAVED ON THE FACE OF ITEM 2 AS SHOWN.

DO REF: T97/030	GEN TOL: LIN± 1	ANG± -
DRN: C DE KOKER	CKD: JVT	DATE: 97-12-12
ENG: HA SLIER	JJ MARAIS	for CHIEF ENG
INFRASTRUCTURE (ELECTRICAL)		
SPOORNET		

INSTALLATION JIG 25kV AC TRACK MAGNET

DIMENSIONS: mm
SCALE: 1:5

A2

DRAWING NO CEE-
TLC-52

SHEET — OF —